



INSTRUMENT PILOT FLIGHT TRAINING SYLLABUS

.....

(Student's Name)

REVISION DATE:
JAN 2023

FLIGHT 01

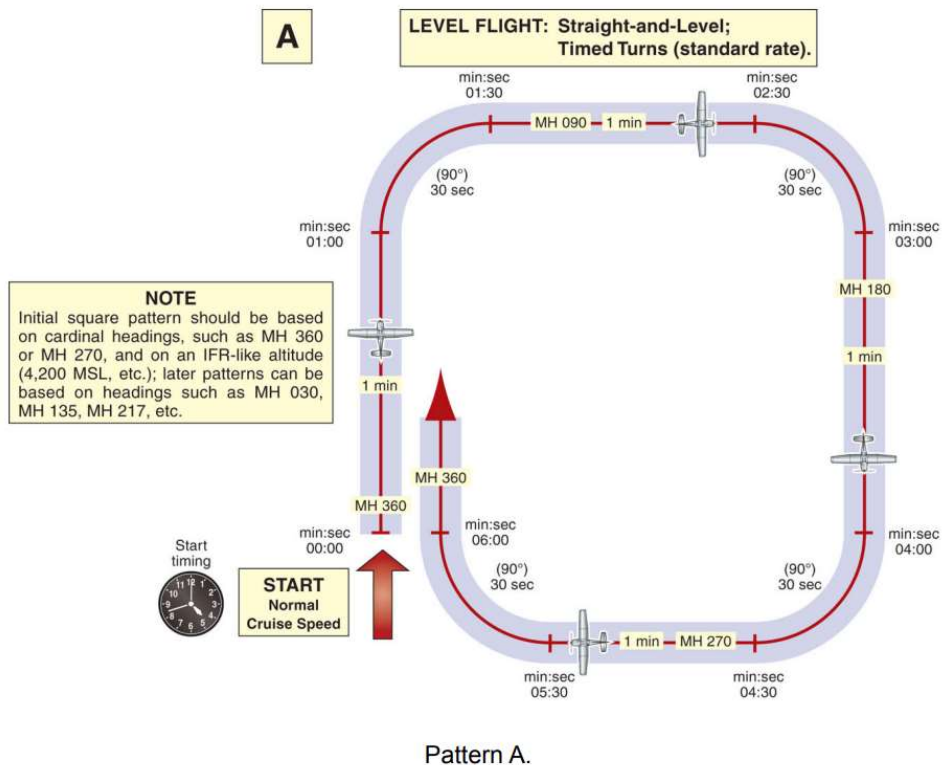
Briefing time: 10 minutes
Flight Time: 1.0 hrs – 1.5 hrs
Debriefing Time: 10 minutes

Briefing focal points:

- Pattern A, purpose and procedure
- Primary and supporting instruments for altitude, airspeed, heading etc

Procedures and maneuvers:

- Preflight Inspection
- Checklist Use
- Taxiing / instrument check
- Normal Takeoff
- Climb attitude
- Constant Airspeed Climb
- Straight and level attitude and sight picture
- Level left and right turns and compass turns
- Timed Turns, standard rate, half standard rate
- Climbing turns
- Descent attitude
- Descending turns
- Steep Turns
- Stall entry and recovery power on and off
- Pattern A full panel
- Simulate an ASR approach to a runway with headings and altitudes assigned by instructor



Debriefing Focal Points:

- Debriefing focal points are at the discretion of the CFI

FLIGHT 02

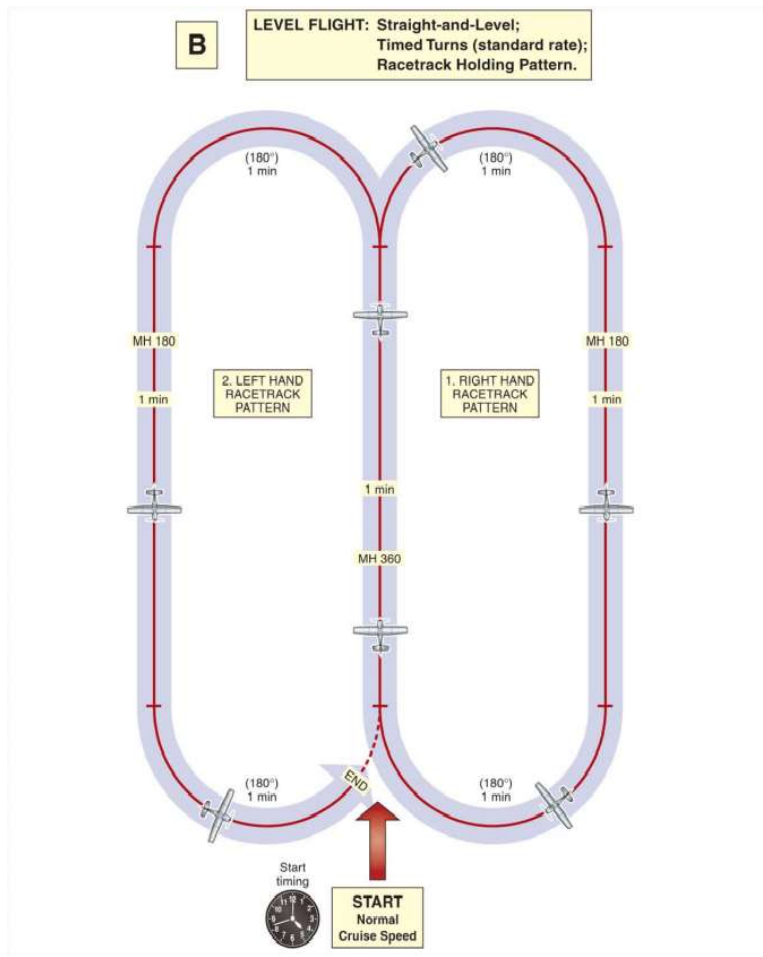
Briefing time: 10 minutes
Flight Time: 1.0 hrs – 1.5 hrs
Debriefing Time: 10 minutes

Briefing focal points:

- Pattern B, purpose and procedure
- Primary and supporting instruments for altitude, airspeed, heading etc

Procedures and maneuvers:

- Preflight Inspection
- Checklist Use
- Taxiing / instrument check
- Normal Takeoff
- Climb attitude
- Constant Airspeed Climb
- Straight and level attitude and sight picture
- Level left and right turns and compass turns
- Timed Turns, standard rate, half standard rate
- Climbing turns
- Descent attitude
- Descending turns
- Stall entry and recovery power on and off
- Pattern A both full and partial panel
- Pattern B full panel
- Simulate an ASR approach to a runway with headings and altitudes assigned by instructor



Pattern B.

Debriefing Focal Points:

- Debriefing focal points are at the discretion of the CFI

FLIGHT 03

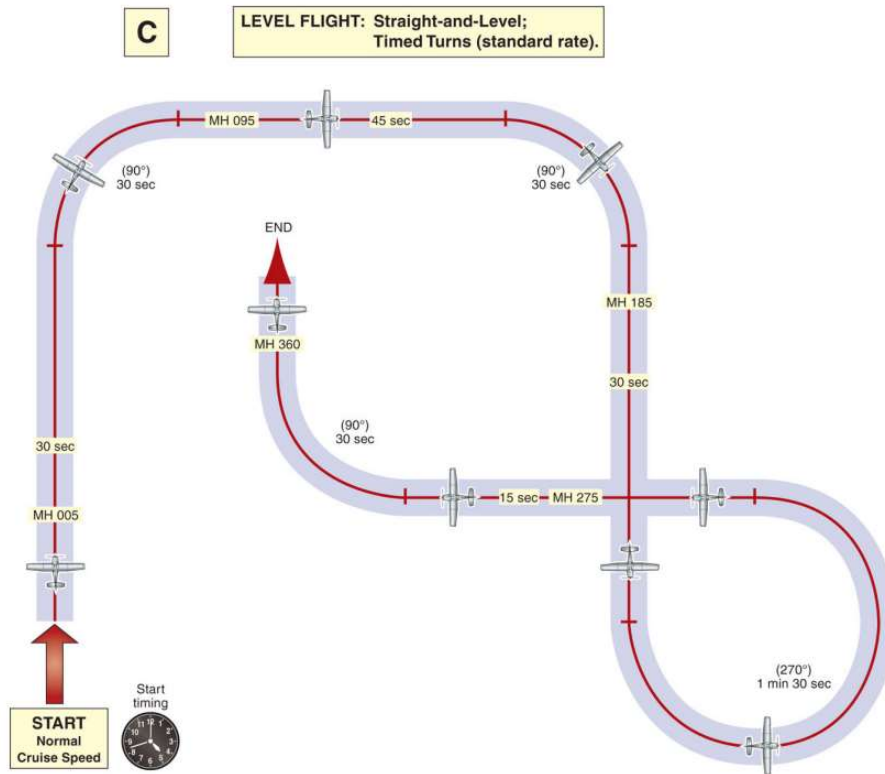
Briefing time: 10 minutes
Flight Time: 1.0 hrs – 1.5 hrs
Debriefing Time: 10 minutes

Briefing focal points:

- Pattern C, purpose and procedure
- Primary and supporting instruments for altitude, airspeed, heading etc

Procedures and maneuvers:

- Preflight Inspection
- Checklist Use
- Taxiing / instrument check
- Normal Takeoff
- Climb attitude
- Constant Airspeed Climb
- Straight and level attitude and sight picture
- Level left and right turns and compass turns
- Timed Turns, standard rate, half standard rate
- Climbing turns
- Descent attitude
- Descending turn
- Pattern A & B both full and partial panel
- Pattern C Full Panel
- Simulate an ASR approach to a runway with headings and altitudes assigned by instructor



Debriefing Focal Points:

- Debriefing focal points are at the discretion of the CFI

FLIGHT 04

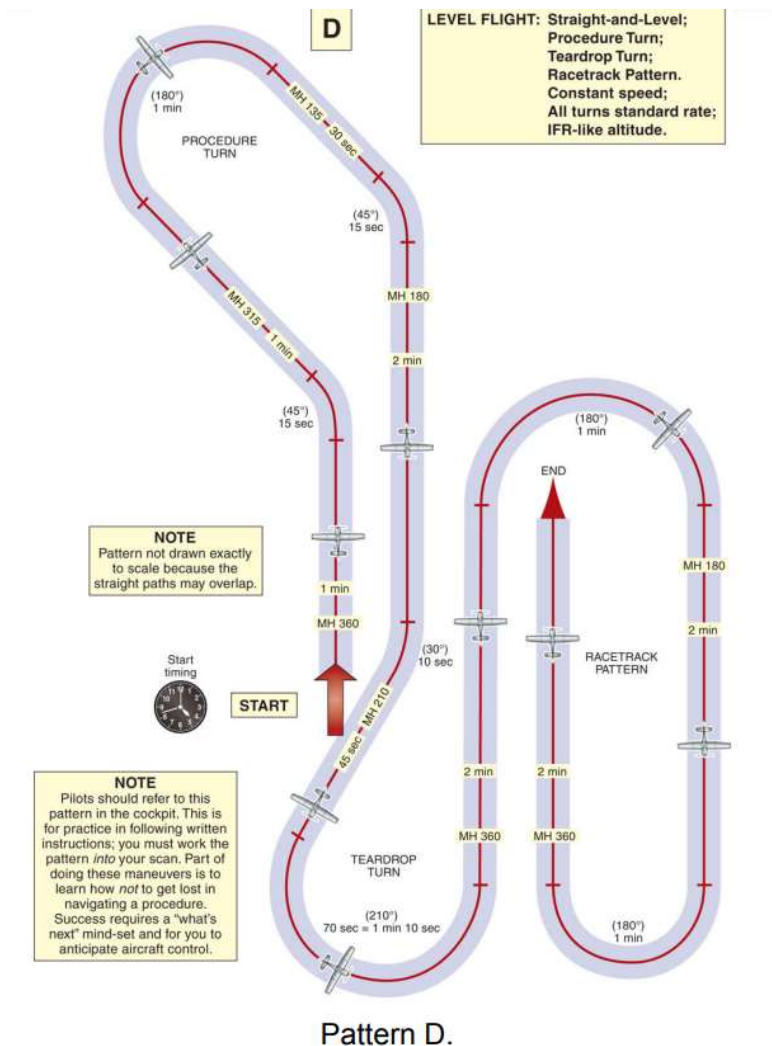
Briefing time: 10 minutes
Flight Time: 1.0 hrs – 1.5 hrs
Debriefing Time: 10 minutes

Briefing focal points:

- Pattern D, purpose and procedure
- Primary and supporting instruments for altitude, airspeed, heading etc

Procedures and maneuvers:

- Preflight Inspection
- Checklist Use
- Taxiing / instrument check
- Normal Takeoff
- Climb attitude
- Constant Airspeed Climb
- Straight and level attitude and sight picture
- Level left and right turns and Compass Turns
- Timed Turns, standard rate, half standard rate
- Climbing turns
- Descent attitude
- Descending turn
- Pattern A, B and C review, Intro to Pattern D
- Simulate an ASR approach to a runway with headings and altitudes assigned by instructor



Debriefing Focal Points:

- Debriefing focal points are at the discretion of the CFI

FLIGHT 05

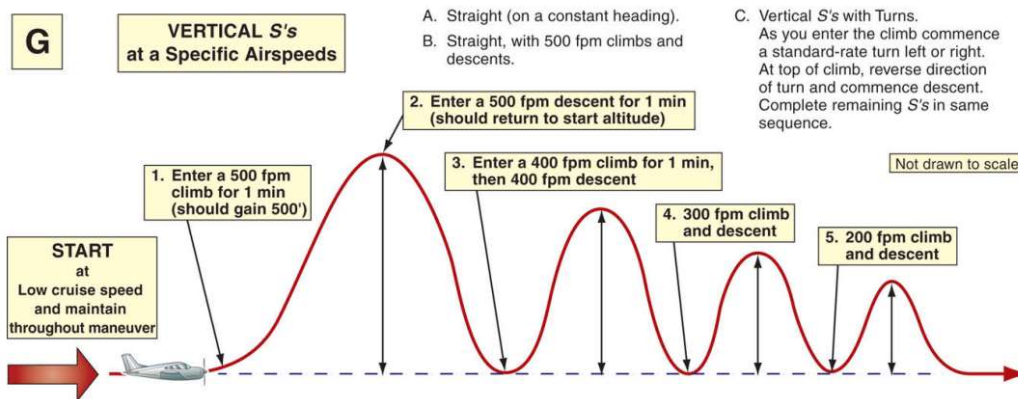
Briefing time: 10 minutes
Flight Time: 1.0 hrs – 1.5 hrs
Debriefing Time: 10 minutes

Briefing focal points:

- Vertical S, purpose, and procedure
- Primary and supporting instruments for altitude, airspeed, heading etc

Procedures and maneuvers:

- Preflight Inspection
- Checklist Use
- Taxiing / instrument check
- Normal Takeoff
- Climb attitude
- Constant Airspeed Climb
- Straight and level attitude and sight picture
- Level left and right turns and Compass Turns
- Timed Turns, standard rate, half standard rate
- Climbing turns
- Descent attitude
- Descending turn
- Introduction to the Vertical S Maneuver
- Simulate an ASR approach to a runway with headings and altitudes assigned by instructor



Debriefing Focal Points:

- Debriefing focal points are at the discretion of the CFI

FLIGHT 06

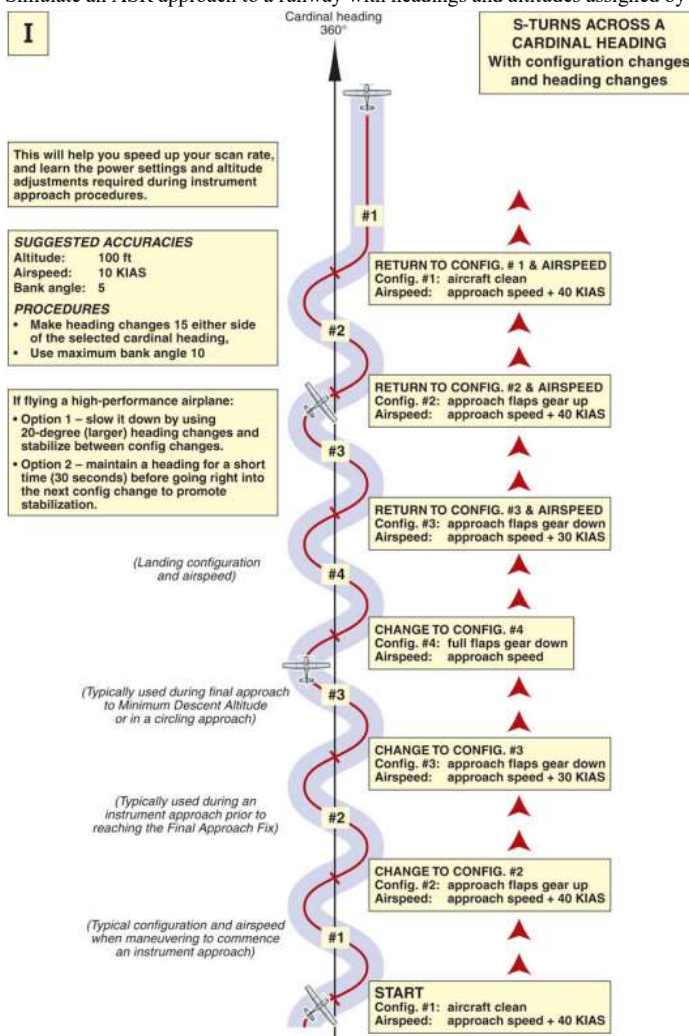
Briefing time: 10 minutes
Flight Time: 1.0 hrs – 1.5 hrs
Debriefing Time: 10 minutes

Briefing focal points:

- S-turns along a radial, situational, and spatial awareness
- Primary and supporting instruments for altitude, airspeed, heading etc

Procedures and maneuvers:

- Preflight Inspection
- Checklist Use
- Taxiing / instrument check
- Normal Takeoff
- Climb attitude
- Constant Airspeed Climb
- Straight and level attitude and sight picture
- Level left and right turns and Compass Turns
- Timed Turns, standard rate, half standard rate
- Climbing turns
- Descent attitude
- Descending turn
- Review Pattern A, B, C, D, Vertical S
- Introduce S-Turns along a radial with and without config changes as appropriate to aircraft
- Simulate an ASR approach to a runway with headings and altitudes assigned by instructor



Debriefing Focal Points:

- Debriefing focal points are at the discretion of the CFI

FLIGHT 07

Briefing time: 10 minutes
Flight Time: 1.0 hrs – 1.5 hrs
Debriefing Time: 10 minutes

Briefing focal points:

- VOR tracking and indications, station passage
- Primary and supporting instruments for altitude, airspeed, heading etc

Procedures and maneuvers:

- Preflight Inspection
- Checklist Use
- Taxiing / instrument check
- Normal Takeoff
- Climb attitude
- Constant Airspeed Climb
- Straight and level attitude and sight picture
- Level left and right turns and Compass Turns
- Timed Turns, standard rate, half standard rate
- Climbing turns
- Descent attitude
- Descending turn
- VOR tracking, intercepting, setting up GPS as a DME stand in
- Identifying intersection by crossing radials
- Simulate an ASR approach to a runway with headings and altitudes assigned by instructor

Debriefing Focal Points:

- Debriefing focal points are at the discretion of the CFI

FLIGHT 08

Briefing time: 10 minutes
Flight Time: 1.0 hrs – 1.5 hrs
Debriefing Time: 10 minutes

Briefing focal points:

- VOR checks, situational, and spatial awareness
- Reverse Sensing, what it is and when it will be experienced
- Primary and supporting instruments for altitude, airspeed, heading etc

Procedures and maneuvers:

- Preflight Inspection
- Checklist Use
- Taxiing / instrument check
- Normal Takeoff
- Climb attitude
- Constant Airspeed Climb
- Straight and level attitude and sight picture
- Level left and right turns and Compass Turns
- Timed Turns, standard rate, half standard rate
- Climbing turns
- Descent attitude
- Descending turn
- VOT checkpoint
- Reverse sensing demonstration
- Simulate an ASR approach to a runway with headings and altitudes assigned by instructor

Debriefing Focal Points:

- Debriefing focal points are at the discretion of the CFI

FLIGHT 09

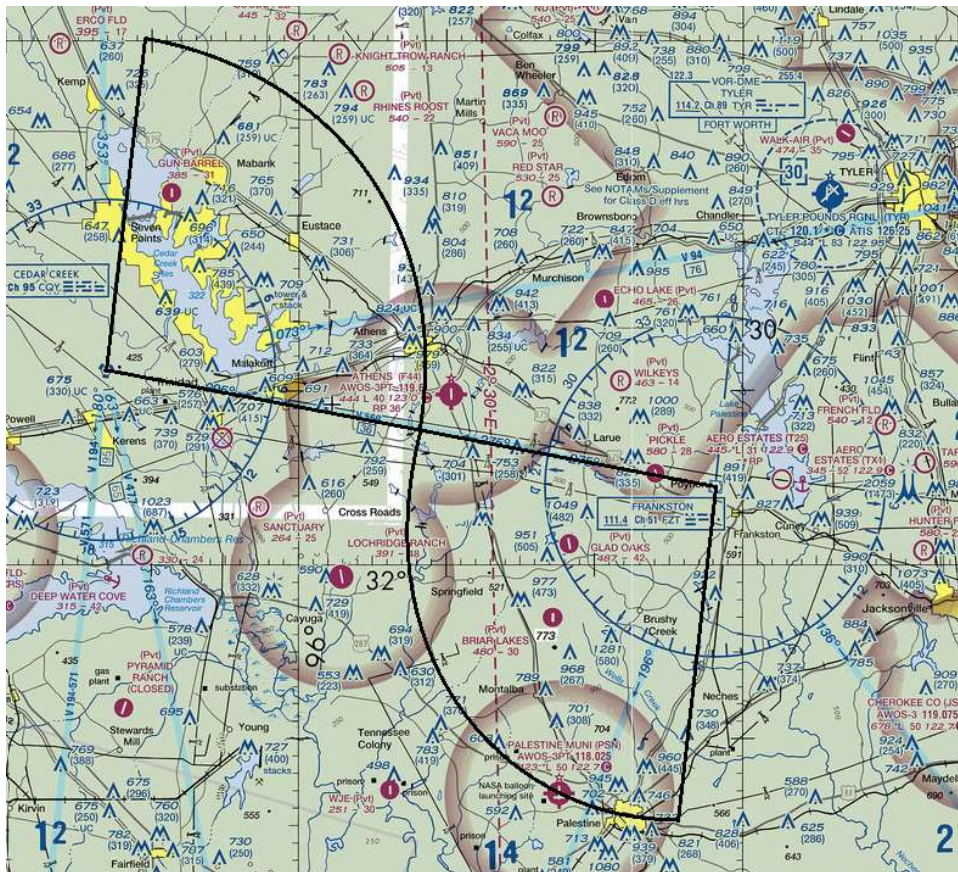
Briefing time: 10 minutes
Flight Time: 1.0 hrs – 1.5 hrs
Debriefing Time: 10 minutes

Briefing focal points:

- DME Arcs, instrument indications, turn ten twist ten. Leading the turn into the arc etc.
- Primary and supporting instruments for altitude, airspeed, heading etc

Procedures and maneuvers:

- Preflight Inspection
- Checklist Use
- Taxiing / instrument check
- Normal Takeoff
- Climb attitude
- Constant Airspeed Climb
- Straight and level attitude and sight picture
- Level left and right turns and Compass Turns
- Timed Turns, standard rate, half standard rate
- Climbing turns
- Descent attitude
- Descending turn
- The “Cedar Creek Shuffle” DME Arc Exercise
- Simulate an ASR approach to a runway with headings and altitudes assigned by instructor



1. Proceed direct to the Cedar Creek VOR thence...
2. Track outbound on the 360° radial until reaching 18 DME thence...
3. Execute a DME Arc, northeast until reaching the 095° radial from CQY thence...
4. Immediately begin an 18 DME arc from the 275° radial from FZT until reaching the 180° radial FZT

Debriefing Focal Points:

- Debriefing focal points are at the discretion of the CFI

FLIGHT 10

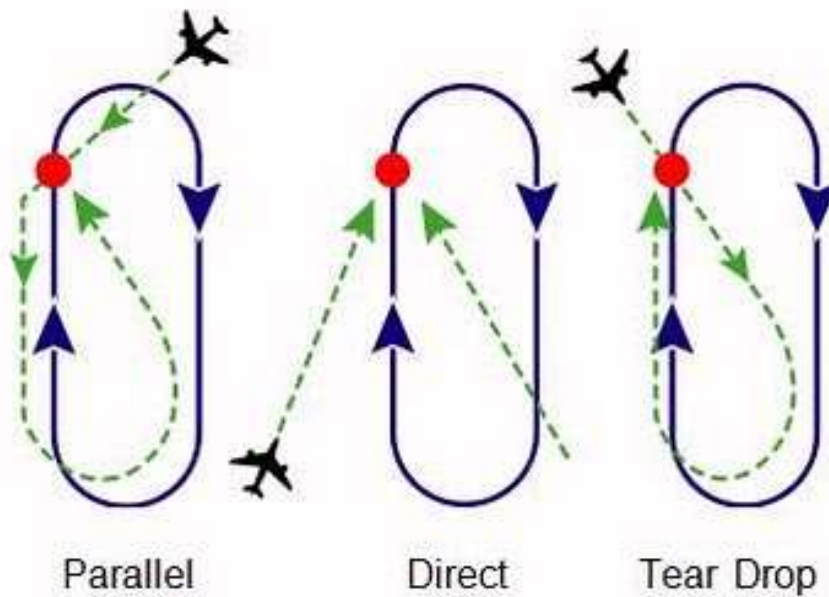
Briefing time: 10 minutes
Flight Time: 1.0 hrs – 1.5 hrs
Debriefing Time: 10 minutes

Briefing focal points:

- Drawing the hold
- Holding, Patterns, Speeds/altitudes, standard and non-standard
 1. Up to 6,000 ft = 200 knots holding speed
 2. 6,001 to 14,000 = 230 knots holding speed
 3. 14,001 and above = 265 knots holding speed
 4. All turns right unless otherwise specified
- Simulate an ASR approach to a runway with headings and altitudes assigned by instructor with a missed approach procedure to a hold

Procedures and maneuvers:

- Preflight Inspection
- Checklist Use
- Taxiing
- Normal Takeoff
- Direct Entry Hold
- Parallel Entry Hold
- Teardrop Entry Hold



Debriefing Focal Points:

- Debriefing focal points are at the discretion of the CFI

FLIGHT 11

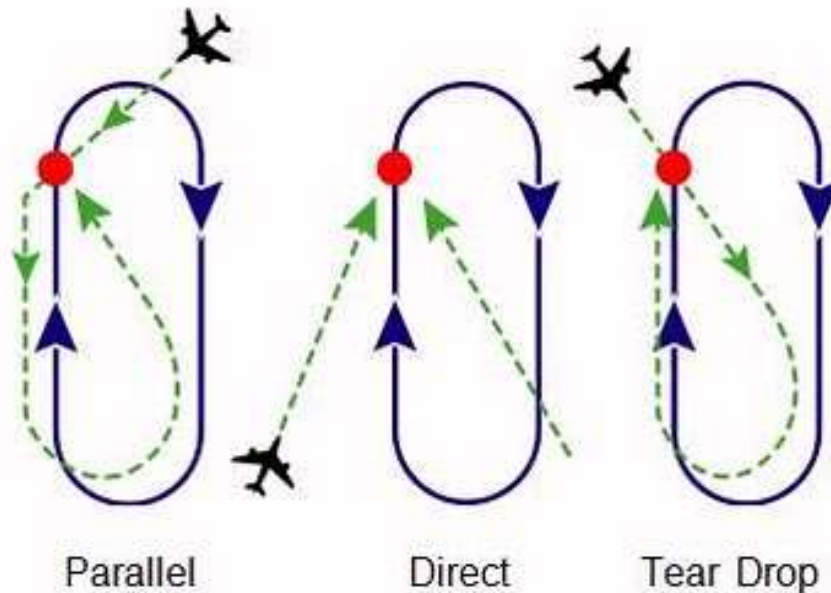
Briefing time: 10 minutes
Flight Time: 1.0 hrs – 1.5 hrs
Debriefing Time: 10 minutes

Briefing focal points:

- Drawing the hold
- Holding, Patterns, Speeds/altitudes, standard and non-standard
 5. Up to 6,000 ft = 200 knots holding speed
 6. 6,001 to 14,000 = 230 knots holding speed
 7. 14,001 and above = 265 knots holding speed
 8. All turns right unless otherwise specified
- Simulate an ASR approach to a runway with headings and altitudes assigned by instructor with a missed approach procedure to a hold

Procedures and maneuvers:

- Preflight Inspection
- Checklist Use
- Taxiing
- Normal Takeoff
- Direct Entry Hold
- Parallel Entry Hold
- Teardrop Entry Hold
- Partial panel holding



Debriefing Focal Points:

- Debriefing focal points are at the discretion of the CFI

FLIGHT 12

Briefing time: 20 minutes
 Flight Time: 1.0 hrs – 1.5 hrs
 Debriefing Time: 10 minutes

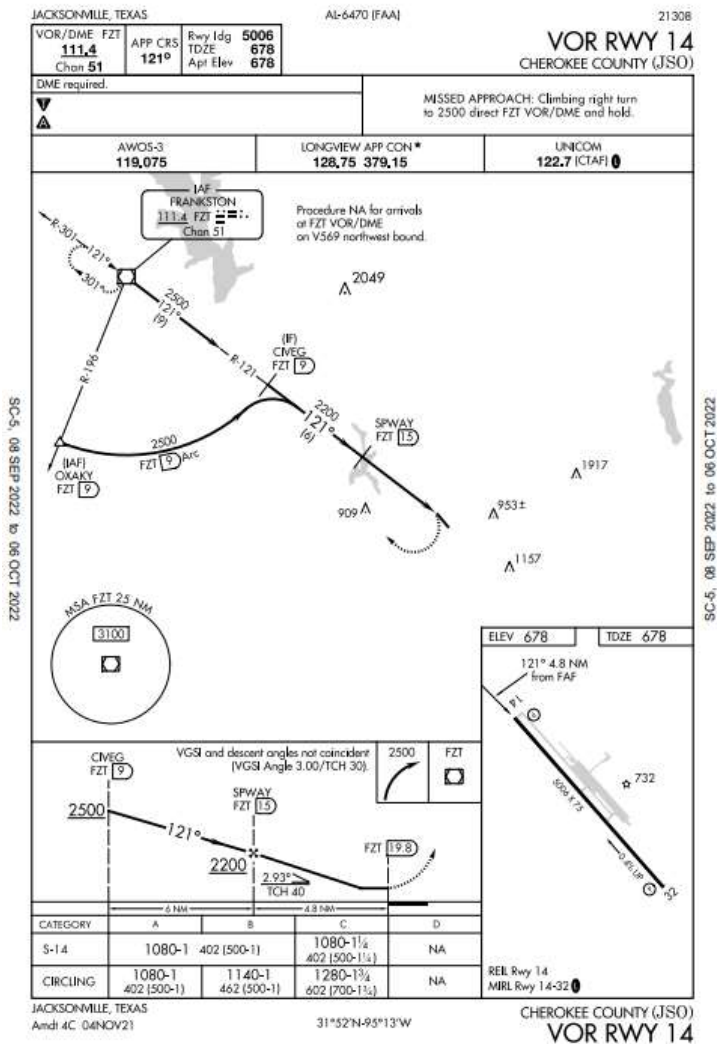
Briefing focal points:

- Non-precision approaches vs. Precision Approaches
- Difference between MDA and DA
- Elements of the approach plate
- Briefing the approach
- Flying the approach
- Missed approach

Procedures and maneuvers:

- Preflight Inspection
- Checklist Use
- Taxiing
- Normal Takeoff
- Contact ATC and request VOR runway 14 at Cherokee County
- Own navigation approach full and partial panel
- Published missed approach full and partial panel

ATTACHED CHART FOR BRIEFING REFERENCE ONLY, USE CURRENT CHART FOR NAVIGATION



Debriefing Focal Points:

- Debriefing focal points are at the discretion of the CFI

FLIGHT 13

Briefing time: 20 minutes
 Flight Time: 1.0 hrs – 1.5 hrs
 Debriefing Time: 10 minutes

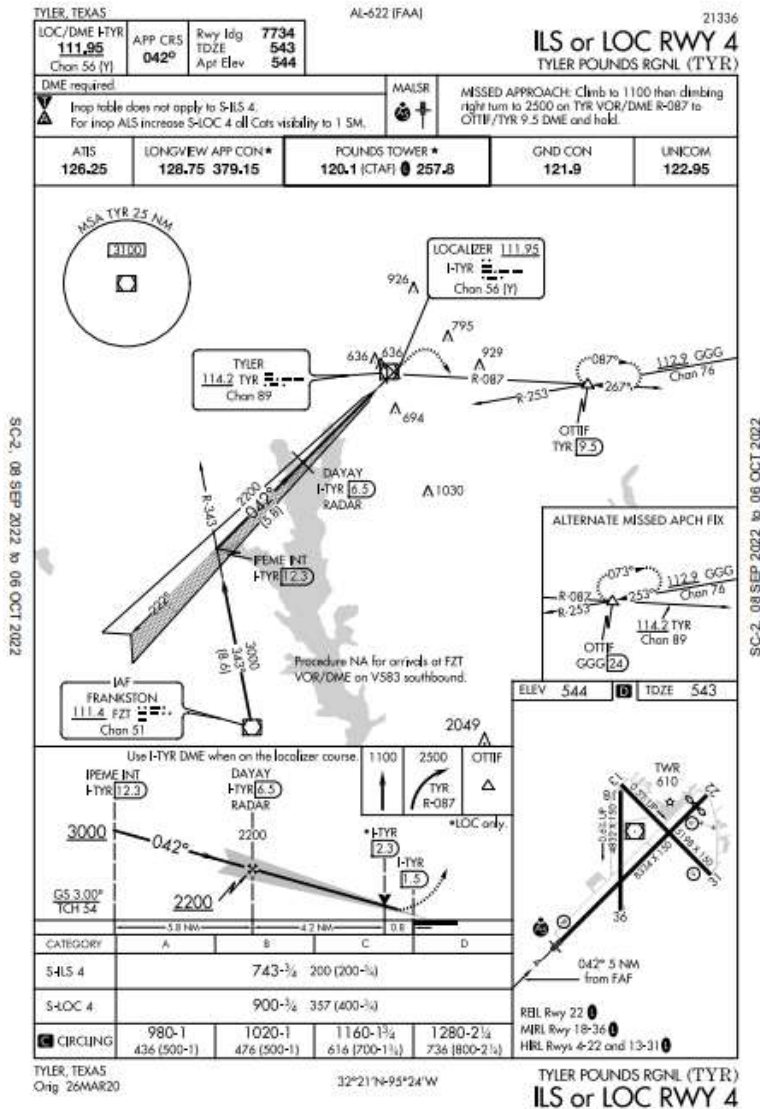
Briefing focal points:

- Non-precision approaches vs. Precision Approaches
- Difference between MDA and DA
- Elements of the approach plate
- Briefing the approach
- Flying the approach
- Missed approach

Procedures and maneuvers:

- Vectors to final approach via ATC full and partial panel
- Full vectors ILS approach to minimums full and partial panel

ATTACHED CHART FOR BRIEFING REFERENCE ONLY, USE CURRENT CHART FOR NAVIGATION



Debriefing Focal Points:

- Debriefing focal points are at the discretion of the CFI

FLIGHT 14

Briefing time: 10- 20 minutes
 Flight Time: 2.0 – 3.0 hrs
 Debriefing Time: 10 minutes

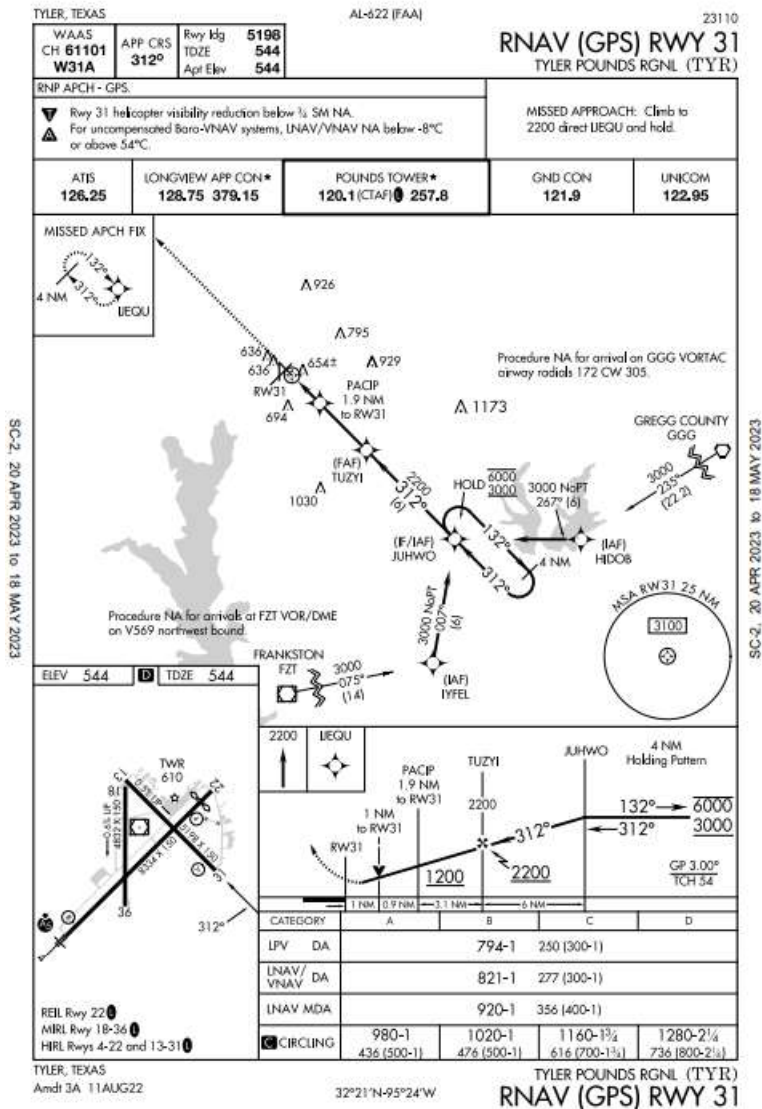
Briefing focal points:

- Non-precision approaches vs. Precision Approaches
- Difference between MDA and DA
- Elements of the approach plate
- Briefing the approach
- Flying the RNAV approach
- Missed approach

Procedures and maneuvers:

- Multiple practice approaches at Tyler Pounds Regional Airport
- ATC Comms / requests
- Published and assigned missed approaches

ATTACHED CHART FOR BRIEFING REFERENCE ONLY, USE CURRENT CHART FOR NAVIGATION



Debriefing Focal Points:

- Debriefing focal points are at the discretion of the CFI

FLIGHT 15

Briefing time: 10- 20 minutes
Flight Time: 2.0 – 3.0 hrs
Debriefing Time: 10 minutes

Briefing focal points:

- Non-precision approaches vs. Precision Approaches
- Difference between MDA and DA
- Elements of the approach plate
- Briefing the approach
- Flying the approach
- Missed approach

Procedures and maneuvers:

- Multiple practice approaches at Tyler Pounds Regional Airport
- ATC Comms / requests
- Published and assigned missed approaches

Debriefing Focal Points:

- Debriefing focal points are at the discretion of the CFI

FLIGHT 16

Briefing time: 10- 20 minutes
Flight Time: 3.0 -4.0 hrs
Debriefing Time: 10 minutes

Briefing focal points:

- Victor Routes
- VOR changeover points
- MEA
- Filing of flight plans
- Closure of flight plans
- Obtaining Clearances
- Preflight Briefing

Procedures and maneuvers:

- Cross Country flight IFR consisting of 3 stops, 250 nm total distance, along airways or ATC directed routing, with an instrument approach at each stop

Recommend Cross Country as follows:

(1) F44 Direct Cedar Creek VOR, V15 Bonham VOR, VOR 17 approach at Bonham, V278 TXK with ILS approach runway 22 at TXK, V289 GGG with VOR-A approach at GGG, Direct Tyler VOR, Direct F44 with RNAV approach F44

(2) F44 Direct Cedar Creek VOR, V14 ACT KACT VOR approach KACT, OMOBE V15 CLL KCLL VOR approach KCLL, OSCER, V212 LFK Radar Vectors ILS KOCH return to F44 visual routing or under hood for unusual attitudes etc

Debriefing Focal Points:

Debriefing focal points are at the discretion of the CFI

FLIGHT 17 THROUGH 25

At this point in the syllabus the student should have acquired at or very near the 20 hours dual instruction for instrument pilot operations as required by FAR 61.65. The syllabus for flights 17 through 25 are meant for the student to build hours by reference to instruments by the use of an appropriately rated safety pilot.

Does the student...

1. Hold at least a current Private Pilot's Certificate? YES NO
2. Hold a current third class medical or higher? YES NO
3. Read, speak, write, and understand English? YES NO
4. Accomplished a home study ground school course? YES NO
5. (or) Received ground training from a CFI? YES NO
6. Able to conduct a satisfactory preflight inspection? YES NO
7. Able to conduct a satisfactory preflight briefing? YES NO
8. Received training in operating by reference to instr.? YES NO
9. Received training in IMC emergency procedures? YES NO
10. Able to conduct satisfactory post flight procedures? YES NO

In regards to Aeronautical Experience, has the student...

1. Attained 50 hours of cross-country flight time PIC? YES NO
2. Received 15 hours of dual flight instruction in actual or simulated IMC? YES NO
3. Completed IFR cross country flight of 250 nm or more
In actual or simulated IMC, along airways or routing
Under ATC direction with a differing approach at
Each destination airport? YES NO
4. Passed the instrument written examination? YES NO
5. Completed 25 hours of IMC flight with safety pilot? YES NO

Flights with a safety pilot aboard may **NOT** be operated under an IFR clearance, however approaches may be practiced under VFR under ATC guidance.

Recommend working on the following:

VOR tracking and intercepting
Unusual Attitudes
DME Arcs
Steep Turns
Patterns A, B, C
Holding Patterns
Various Approaches At F44, KTYR, GGG and/or KJSO etc

Briefing time: 10 minutes
Flight Time: 1.0 hrs – 1.5 hrs
Debriefing Time: 10 minutes

Briefing focal points:

- Simulated Oral Exam of approximately 2.5 hours duration

Procedures and maneuvers:

- Preflight Inspection
- Checklist Use
- Taxiing / instrument check
- Normal Takeoff
- Climb attitude
- Demonstrate constant airspeed climb wings level
- Demonstrate constant airspeed climb while turning to assigned headings
- Demonstrate straight and level flight
- Demonstrate turns to assigned headings
- Demonstrate Compass Turns
- Partial Panel Demonstration (turns, climbs, descents)
- Brief and enter holding pattern
- Execute VOR/DME approach with missed as assigned by ATC
- Execute ILS approach with missed approach procedure as depicted
- Execute Localizer Approach with missed approach as assigned by ATC
- Execute VOR/DME approach partial panel to stop and go landing
- Execute ILS approach to full stop partial panel

Debriefing Focal Points:

- Debriefing focal points are at the discretion of the CFI

Briefing time: 10 minutes
Flight Time: 1.0 hrs – 1.5 hrs
Debriefing Time: 10 minutes

Briefing focal points:

- Simulated Oral Exam of approximately 2.5 hours duration

Procedures and maneuvers:

- Preflight Inspection
- Checklist Use
- Taxiing / instrument check
- Normal Takeoff
- Climb attitude
- Demonstrate constant airspeed climb wings level
- Demonstrate constant airspeed climb while turning to assigned headings
- Demonstrate straight and level flight
- Demonstrate turns to assigned headings
- Demonstrate Compass Turns
- Partial Panel Demonstration (turns, climbs, descents)
- Brief and enter holding pattern
- Execute VOR/DME approach with missed as assigned by ATC
- Execute ILS approach with missed approach procedure as depicted
- Execute Localizer Approach with missed approach as assigned by ATC
- Execute VOR/DME approach partial panel to stop and go landing
- Execute ILS approach to full stop partial panel

Debriefing Focal Points:

- Debriefing focal points are at the discretion of the CFI

Briefing time: 10 minutes
Flight Time: 1.0 hrs – 1.5 hrs
Debriefing Time: 10 minutes

Briefing focal points:

- Simulated Oral Exam of approximately 2.5 hours duration

Procedures and maneuvers:

- Preflight Inspection
- Checklist Use
- Taxiing / instrument check
- Normal Takeoff
- Climb attitude
- Demonstrate constant airspeed climb wings level
- Demonstrate constant airspeed climb while turning to assigned headings
- Demonstrate straight and level flight
- Demonstrate turns to assigned headings
- Demonstrate Compass Turns
- Partial Panel Demonstration (turns, climbs, descents)
- Brief and enter holding pattern
- Execute VOR/DME approach with missed as assigned by ATC
- Execute ILS approach with missed approach procedure as depicted
- Execute Localizer Approach with missed approach as assigned by ATC
- Execute VOR/DME approach partial panel to stop and go landing
- Execute ILS approach to full stop partial panel

Debriefing Focal Points:

- Debriefing focal points are at the discretion of the CFI

